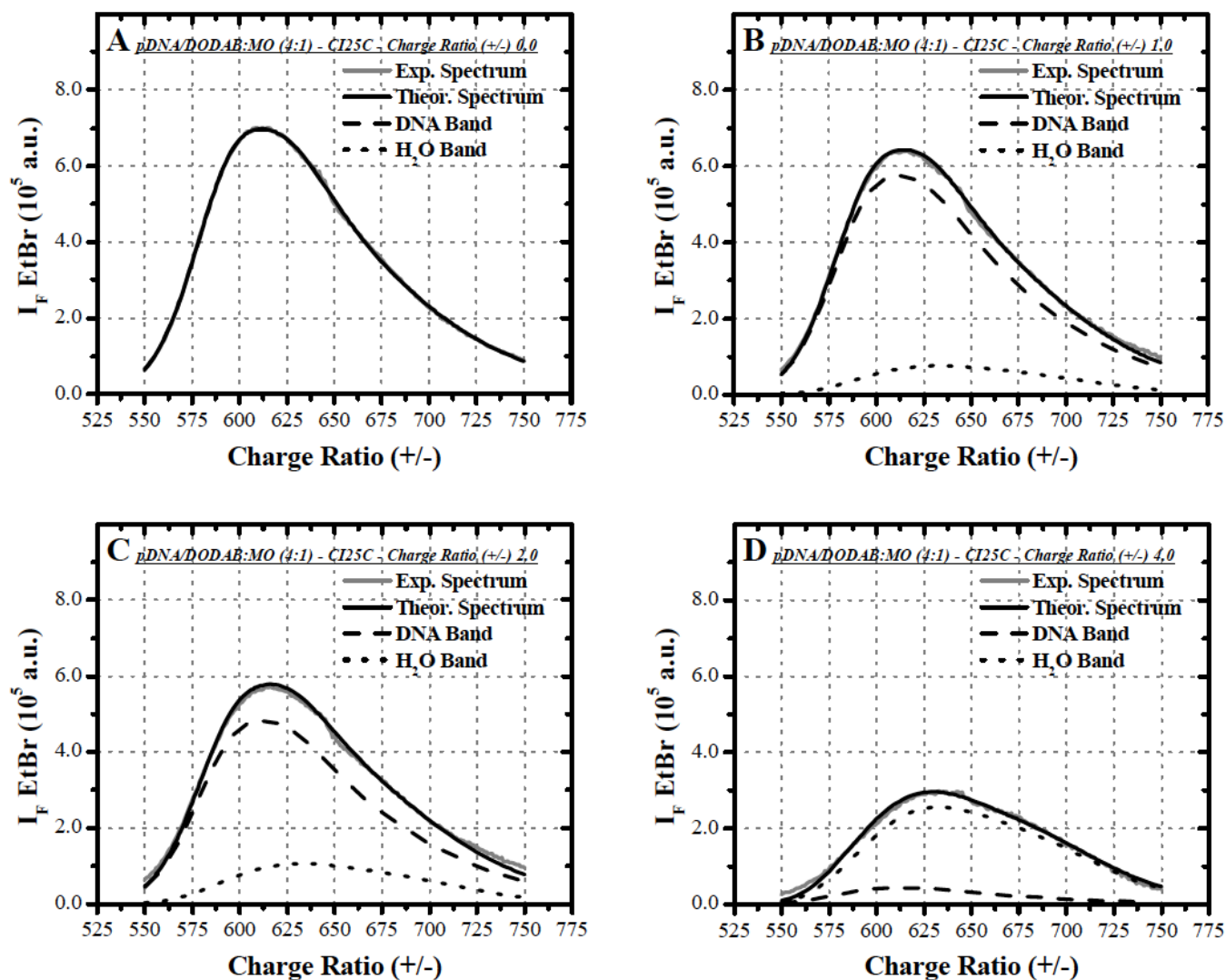
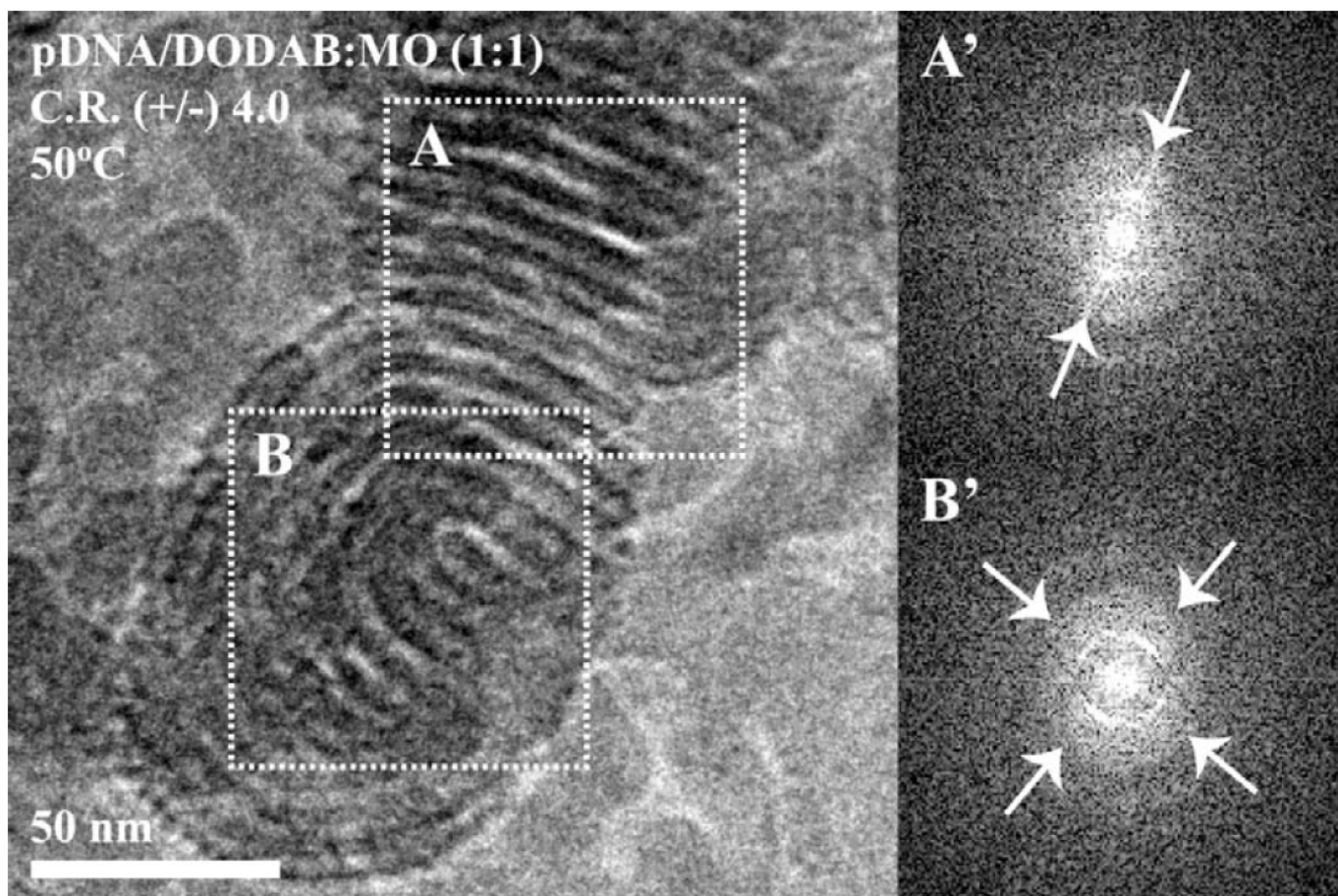


SUPPLEMENTAL MATERIALS



Supplementary Material Figure 1: Fluorescence emission spectra of EtBr ($\lambda_{exc} = 510$ nm) in a pSV- β -galactosidase solution ($[\text{phosphate}]_{\text{initial}} = 4.2 \times 10^{-5}$ M), with increasing concentrations of DODAB:MO (4:1) vesicles by one-step lipoplex preparation method (25 °C), showing the spectral decomposition into pDNA (dash line) and H₂O bands (dot line). **A** - Before DODAB:MO vesicle addition; **B** - At CR (+/-) of 1.0; **C** - At CR (+/-) of 2.0; and **D** - At CR (+/-) of 4.0.



Supplementary Material Figure 2: Cryo-TEM imaging of pDNA/DODAB:MO (1:1) lipoplexes at CRS (+/-) 4.0 (1 mM total lipid) prepared by different methods (OS 25 °C, OS 50 °C), complemented with FFT diagrams (A', B') for specified zones of the images (A,B, respectively).