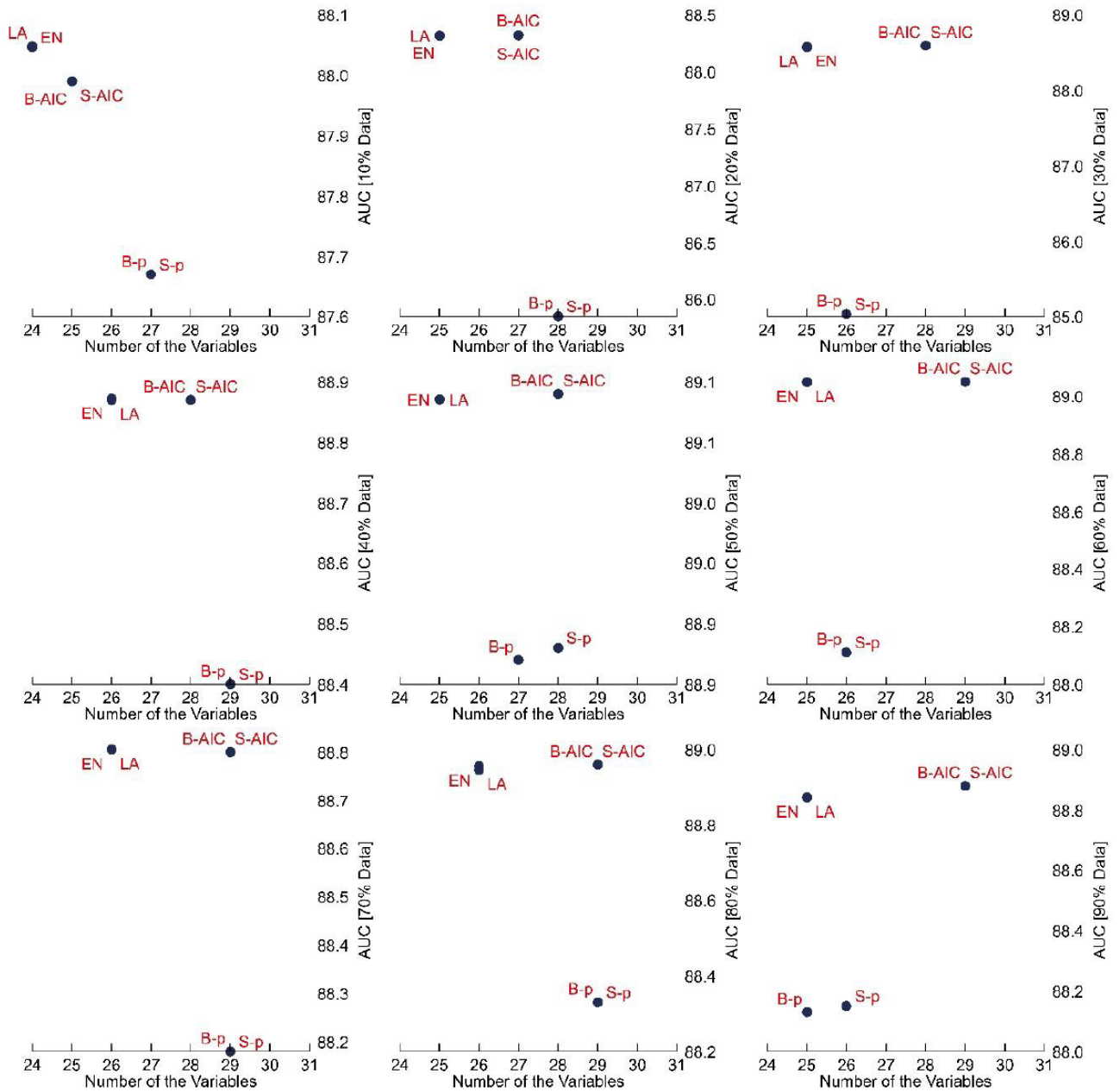
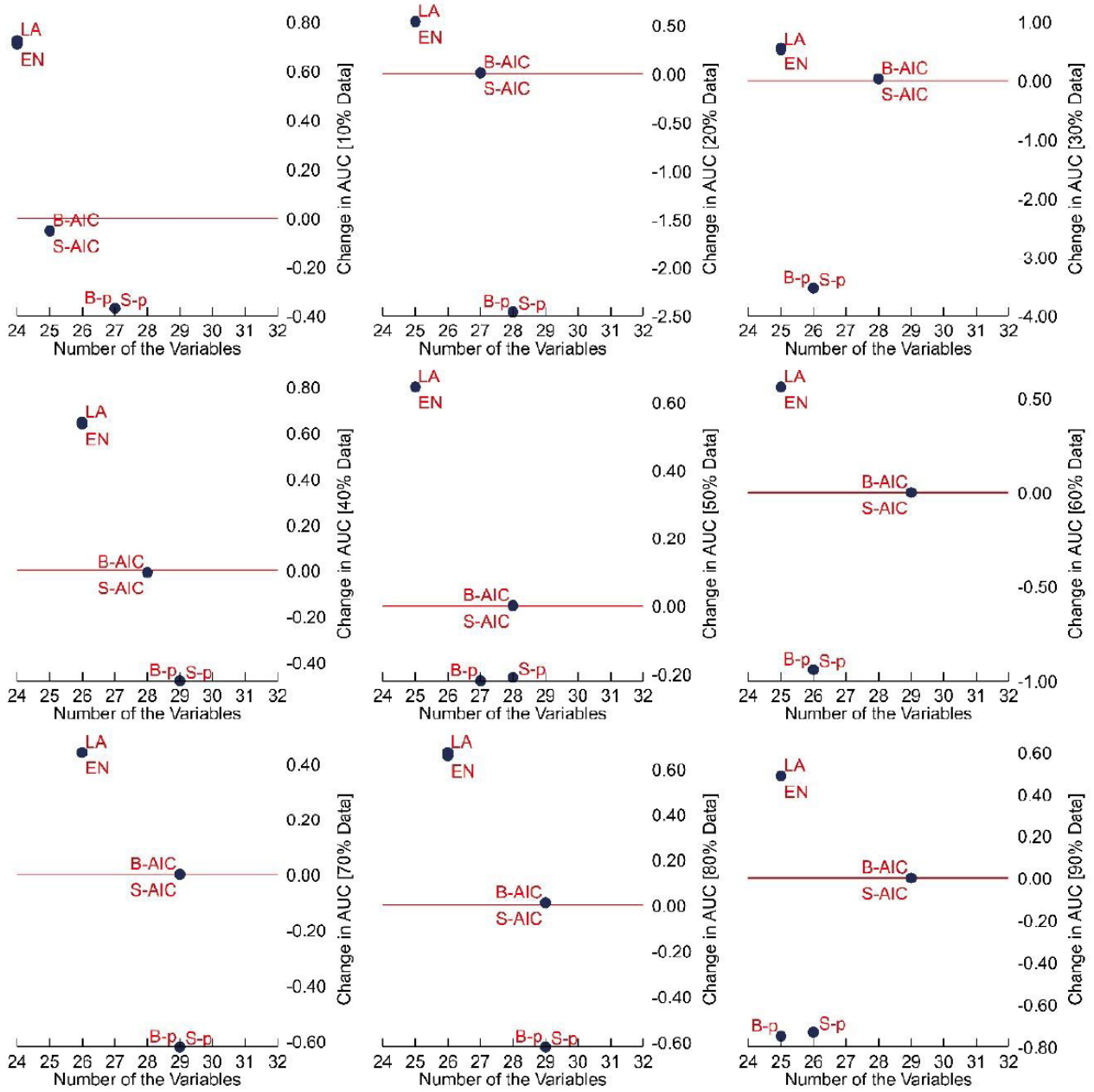


## Supplementary Figures



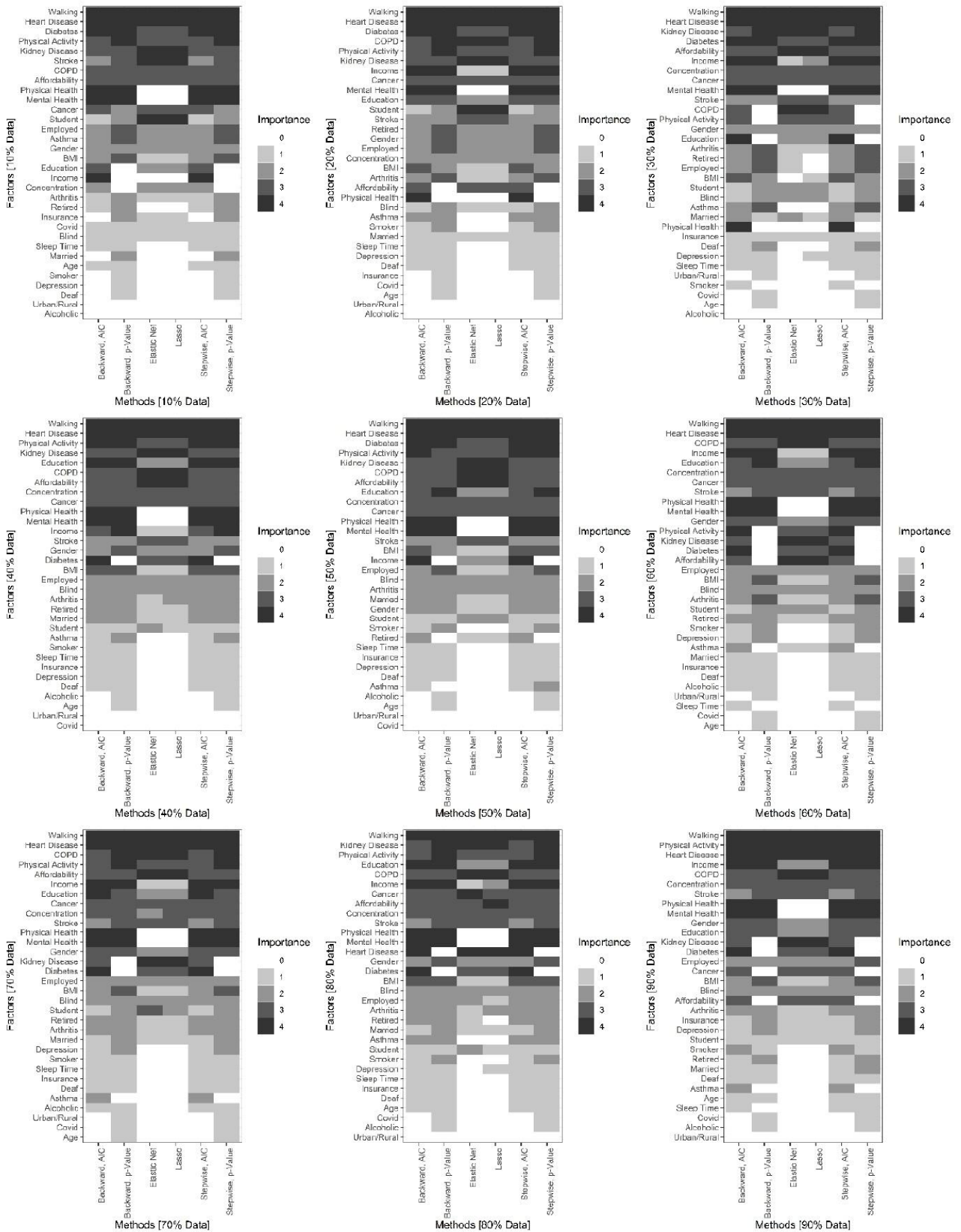
**Supplementary Figure 1:** Parsimony measures, the area under the curve is the discrimination performance on the validation set by varying database size.

The figure presented here is an extension of Figure 1, displaying the performance based on parsimony measures for the varying database size ranging from 10 to 90 percent of the whole dataset.



**Supplementary Figure 2:** An evaluation of the discrimination ability of a model showing the variance in AUC between the full variable model and the reduced variable model by varying database size.

The figure presented here is an extension of Figure 2, displaying the performance based on the difference between the full variable model and the reduced variable model for the varying database size ranging from 10 to 90 percent of the whole dataset.



**Supplementary Figure 3:** Heat map illustrating the predictive ability importance of variables based on their selection method by size of the database.

The figure presented here is an extension of Figure 3, displaying the predictive ability importance of variables for the varying database size ranging from 10 to 90 percent of the whole dataset.